



HARVEY MARIA®  
— FABULOUS FLOORS —



# INSPIRATIONAL FLOORING FOR A HOME LESS ORDINARY

Premium Wood Plank & Parquet	8
Organics Stone	10
Dovetail	12
Check	14
Parquet	16
Lattice	18
Spot & Rose Sprig	20
Heritage Colours	22
Organics Design	24
Feature Strips	26
Accessories	27
Other Collections	28

Cover: Organics, Jurassic Square & Jurassic Edge  
Left: Dovetail Ochre

We believe that beautiful flooring is at the heart of great interior design, so I hope you'll be inspired by our Signature Collection. Contemporary and perfectly balanced, it's been created to bring warmth and style to your home.

Alongside authentic wood designs and timeless colours, the collection incorporates the work of some of Britain's best-loved designers. This year we're delighted to introduce Dovetail, an exclusive new collection from award-winning textiles artist Neisha Crosland and Organics, a collection of reassuringly familiar, yet contemporary, stone and patterned designs.

We love to hear from you, so our design team are always on hand to offer advice and discuss your ideas in more detail. Your approved Harvey Maria flooring retailer can also offer additional help, along with an expert fitting service.

We hope we can help you find your fabulous floor, and we look forward to hearing from you soon!

**Mark Findlay**  
Founder



# A LITTLE BIT MORE ABOUT HARVEY MARIA

Back in 1994, floors were neglected spaces. Trampled on and overlooked, many considered them an afterthought, but we set out to create something new and vibrant. We wanted to wave goodbye to boring flooring, and replace it with something that would breathe new life into rooms all over the home.

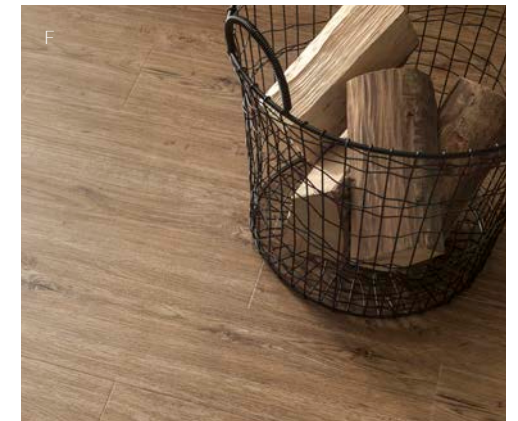
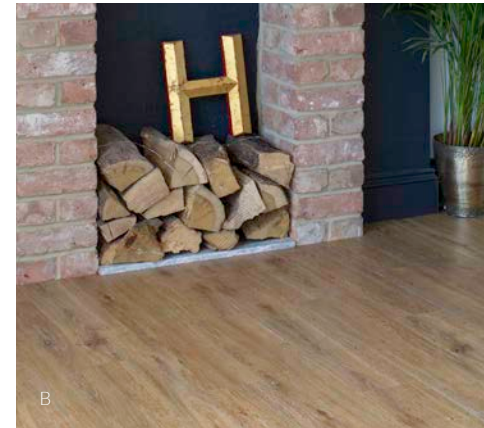
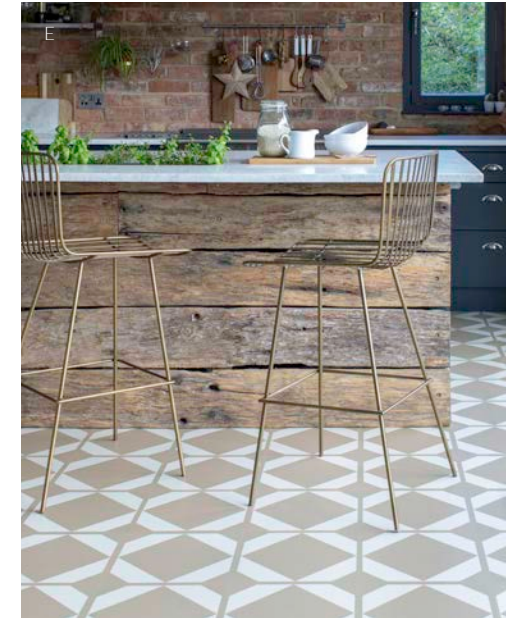
We began in the back bedroom of a house in Battersea together with a loveable, live-wire dog called Harvey. And, as you've probably guessed, it was Harvey who gave the company its name. Our quirky floor tiles quickly established Harvey Maria's reputation for individual and innovative design, with loyal customers travelling to the house to collect their new floors.

It's fair to say that we've moved on a bit since those days, with people all over the world choosing Harvey Maria flooring for their homes. You're also equally likely to see one of our designs gracing the interior of shops, restaurants and boutique hotels. Our exclusive designer collaborations have added a little extra glamour to our collection, and we're lucky enough to be working with some of the biggest names in British design.

Of course, there's no better endorsement than the wonderful photos you send us every day. So much of our inspiration comes from your real homes, and we showcase a selection on our Customer Floor Gallery. We've always said that floors should take centre stage, and you've really shown us how.

Let's hear it for beautiful floors everywhere!

- A. Little Bricks Bay Blue, Forget-Me-Not and Steel
- B. Premium Plank Limed Oak
- C. Parquet Stone
- D. Lattice Seedpod
- E. Dovetail Ochre
- F. Premium Plank Natural Oak



# OUR GUEST DESIGNERS

As well as our own unique collections, we work closely with some of Britain's best-loved designers, bringing you an inspirational assortment of classic and contemporary patterns.

- A. Dovetail Lavastone
- B. Spot Prussian Blue
- C. Rose Sprig White
- D. Lattice Pebble Grey with Little Bricks Steel

## NEISHA CROSLAND

Award-winning textile artist Neisha Crosland takes inspiration from shapes found in nature, using them to create her trademark oversized graphics and symmetrical geometric motifs.



## Cath Kidston®

Inspired by growing up in the British countryside and a love of vintage prints, Cath Kidston opened her first shop in West London in 1993. More than 20 years later, Cath Kidston is the home of Modern Vintage, designing pretty, colourful prints that turn modern products into something witty, fresh and fun.



## Dee Hardwicke

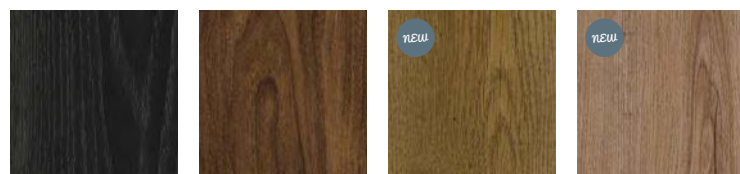
Mixed-media artist Dee Hardwicke is endlessly inspired by the natural landscape, with each season bringing a fresh palette of colours, patterns, textures, and exciting new ideas.

# PREMIUM WOOD PLANK & PARQUET

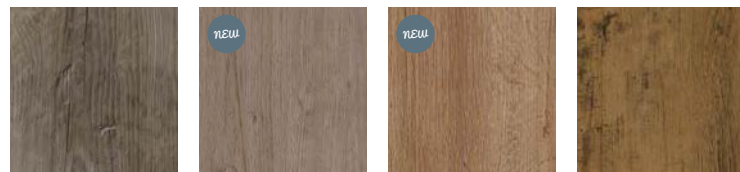
Our beautifully detailed Premium Wood collection is available in a stunning range of finishes and tones. With an incredibly realistic and hard-wearing finish, each design boasts supreme practicality without ever compromising on style.

Available in standard plank size with a bevelled edge for greater authenticity, and with a limited selection now available in a smaller block size to recreate the classic parquet look. And complemented with design feature strips to create the appearance of refined veneer inlays.

All the Premium Woods have a class leading wear layer (0.7mm) as standard, providing the perfect combination of luxurious looks and guaranteed durability.



Lamp Wood\* Walnut Fumed English Oak\* Natural Oak



Church Pine Portobello Oak Limed Oak\* Reclaimed Pine

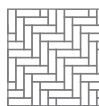


Sawn Oak County Oak\* Sussex Oak\*

**PREMIUM WOOD PLANK**  
15.2cm x 91.4cm  
Wear layer: 0.7mm



**PREMIUM WOOD PARQUET**  
10.2cm x 30.5cm  
Wear layer: 0.7mm



A. Parquet Sussex Oak with Dark Oak feature strip  
B. Plank Portobello Oak  
C. Plank Church Pine



NEW



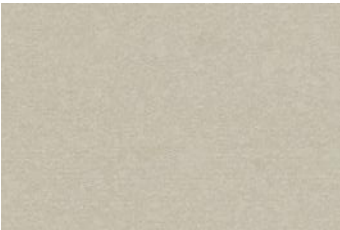
# ORGANICS STONE

Organics Stone is our nod to the traditional, with just a touch of contemporary styling. It's the perfect design for a kitchen, hallway or bathroom. Available in a palette of neutral shades, this classic design will provide a clean, neutral backdrop to your interior scheme.

Elegant on its own, or with feature strips between to create the time-honoured tiled floor look. And with its amazing durability and practicality, this clean, understated design will give you years of flooring pleasure.



Natural



Portland



Jurassic



Cambrian

**ORGANICS STONE**  
30.5cm x 45.7cm



A. Jurassic with Cool Grey feature strip  
B. Cambrian with Dark Grey feature strip  
C. Portland Stone with Warm Grey feature strip





NEW

A

## DOVETAIL by NEISHA CROSLAND

Drawing inspiration from period tile patterns, Dovetail brings traditional flooring right up to date with its linear graphic motif and bold, repeated diamond design.

As with all our Signature collections, practicality and style are considered in equal measure. Not only creating an eye-catching floorcovering for living and entertaining spaces, Neisha Crosland's Dovetail is hard-wearing, easy to maintain and warm underfoot, making it the ideal surface for high footfall areas and bathrooms.

"Marble/ stone inlay floors as seen in Roman and Renaissance Italy have been sources of inspiration. This is a design that delivers a clean, modern mood whilst still resonating with the classic antiquity of ancient Rome".

NEISHA CROSLAND



Flax

Ink Black

Lavastone

Ochre

Oxford Blue

DOVETAIL  
30.5cm x 30.5cm



B

A. Dovetail Ochre  
B. Dovetail Flax  
C. Dovetail Oxford Blue



C

## CHECK by NEISHA CROSLAND

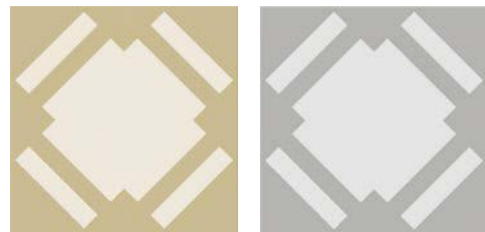
Introducing Check, a collection from British textile artist Neisha Crosland. Drawing inspiration from classic flooring design, Check features a bold symmetrical print which, when laid, cleverly transforms into a distinctive diamond motif.

The timeless pattern is reminiscent of period architecture, bringing contemporary elegance to even the most demanding rooms of your home.



Slate

Graphite



Camomile

Flint

**CHECK**  
30.5cm x 30.5cm



A. Check Camomile  
B. Check Slate  
C. Check Flint

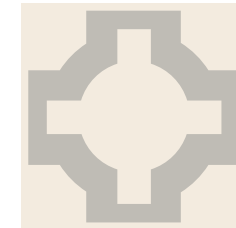




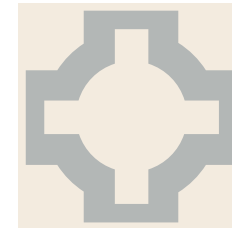


## PARQUET by NEISHA CROSLAND

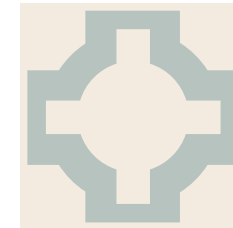
Neisha's award-winning Parquet design was her first collaboration with Harvey Maria, and is now a firm favourite with architects and interior designers worldwide. With its Celtic-inspired motif, this striking geometric pattern is a perfect blend of classic and contemporary design.



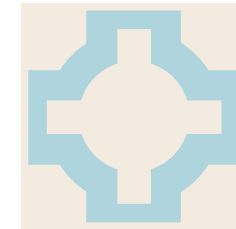
Stone



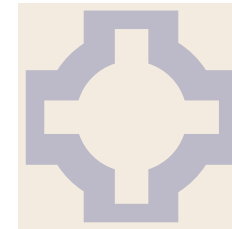
Sage



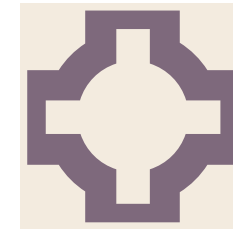
Eggshell



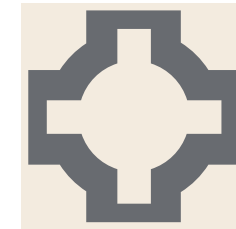
Sky Blue



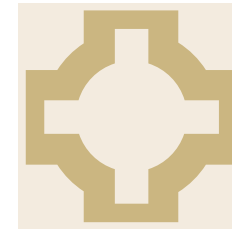
Thistle Grey



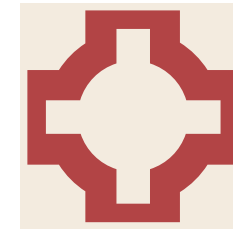
Heather



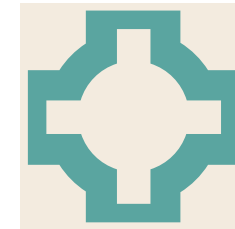
Charcoal



Mimosa



Red Oxide



Turquoise

**PARQUET**  
30.5cm x 30.5cm



A. Parquet Charcoal with Lamp Wood  
B. Parquet Red Oxide  
C. Parquet Eggshell with Little Bricks Steel



# LATTICE by DEE HARDWICKE

Inspired by the rhythmic delicacy of scattered petals, Lattice by Dee Hardwicke replicates her hand-painted style in a palette of organic shades. This versatile pattern complements a range of décor, adding character and charm to any room of your home.



A. Lattice Pear Tree Green with Reclaimed Pine  
 B. Lattice Storm Grey  
 C. Lattice Pebble grey with Little Bricks Steel



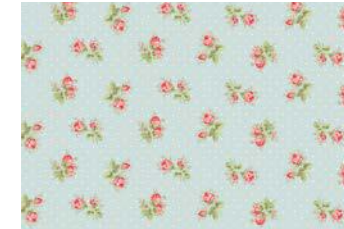


## SPOT & ROSE SPRIG by *Cath Kidston*<sup>®</sup>

Spot and Rose Sprig are amongst Cath Kidston's most iconic designs, and our exclusive collection is the perfect way to add a touch of loveliness to your home. Featuring dainty rosebuds and whimsical polka dots, these nostalgic designs are matched with modern practicality, making them both hard-wearing and beautiful.

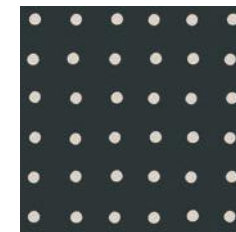


White

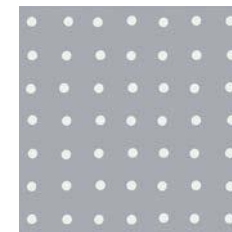


Duck Egg Blue

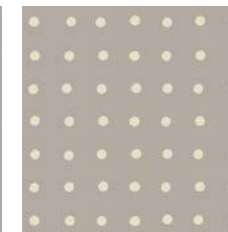
**ROSE SPRIG**  
30.5cm x 45.7cm



Lamp Black

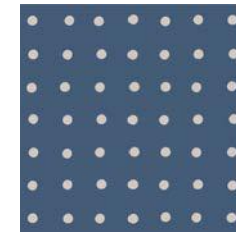


Dove Grey

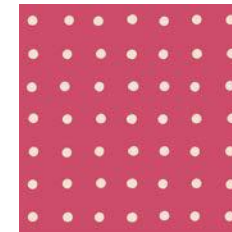


Stone

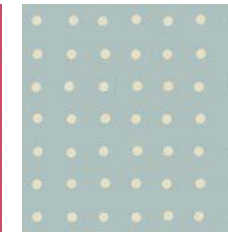
**SPOT**  
30.5cm x 30.5cm



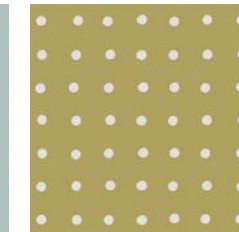
Prussian Blue



Red



Blue



Willow



A. Spot Dove Grey  
B. Rose Sprig White  
C. Spot Prussian Blue

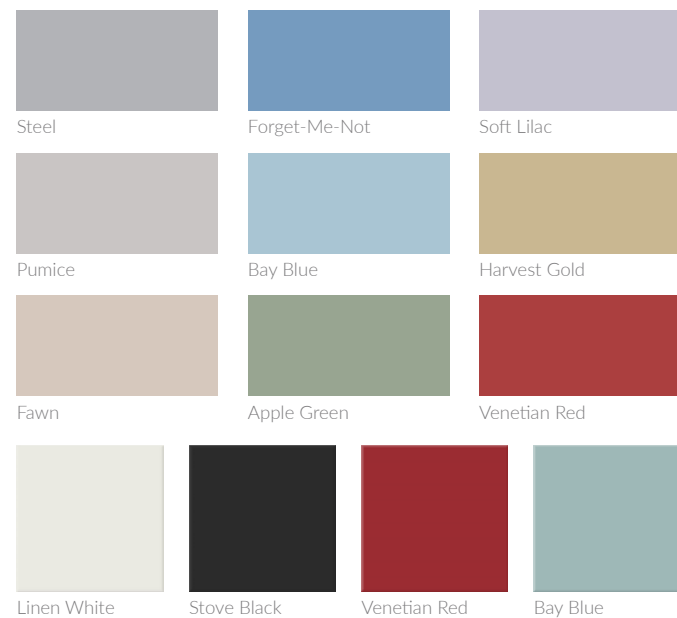


## HERITAGE COLOURS

Say hello to Heritage Colours - a contemporary multi-tonal collection of fresh colours in a choice of sizes. Their size and shape make them wonderfully tactile, whilst a high-quality finish ensures their incredible durability. The gentle micro-bevelled edge creates subtle definition to create a coloured surface with a hint of movement and pattern.

Use the playful Little bricks creatively to border a designer tile, or lay as an eye-catching block-coloured floor. Choose from a variety of laying patterns, to add texture and pattern to your space.

The colours of the new Squares collection are ideal for creating that gorgeous chequerboard look - a timeless classic for your kitchen, bathroom or hallway!



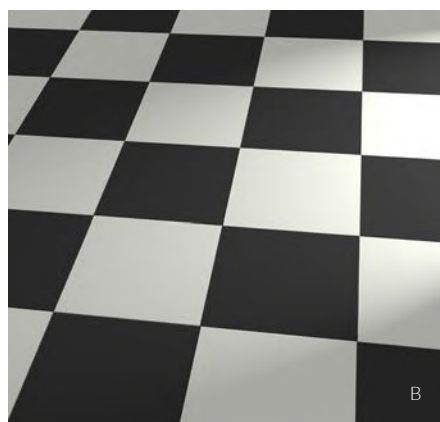
**HERITAGE COLOURS - LITTLE BRICKS**  
15.2cm x 30.5cm



**HERITAGE COLOURS - SQUARES**  
22.8cm x 22.8cm



A. Little Bricks Steel with Lattice Pebble Grey  
B. Squares Linen White & Stove Black  
C. Little Bricks Bay Blue, Forget-Me-Not and Steel





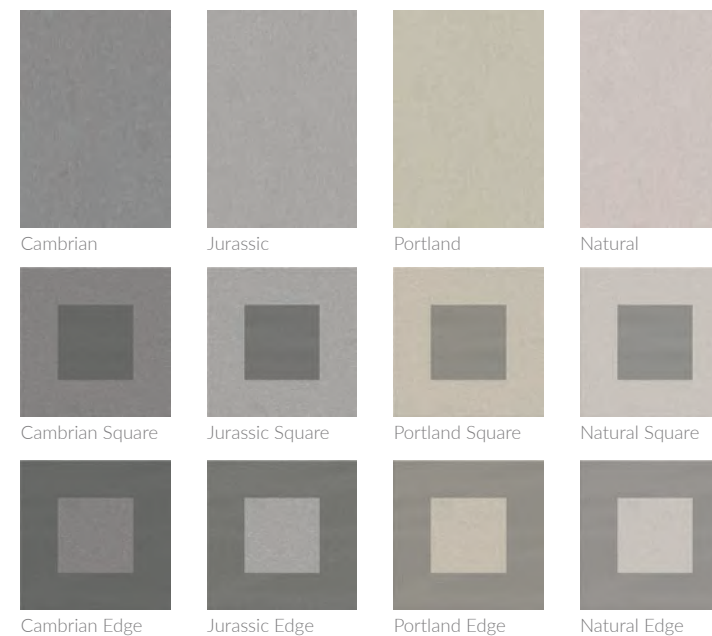
NEW

## ORGANICS DESIGN

Taking its base as Organics Stone, the striking square tiles of the Design collection use shadow detail to transform the appearance of the background, creating the dramatic 'Square' to the centre, and contrasting 'Edge' at the perimeter. The result is a hugely versatile set of connected tiles with limitless design possibilities.

"Organics was inspired by nature and the minimalism of postmodern architecture and furniture. Designed to be reassuringly recognisable but at the same time, contemporary and original. Pattern and colour are carried seamlessly through the collection allowing multiple combination opportunities. Or perhaps beauty is discovered in the singularity of something quite simple".

ANDREW SMITH - Designer



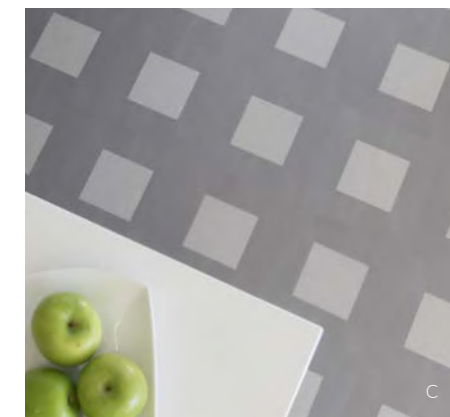
**ORGANICS STONE**  
30.5cm x 45.7cm



**ORGANICS DESIGN**  
30.5cm x 30.5cm

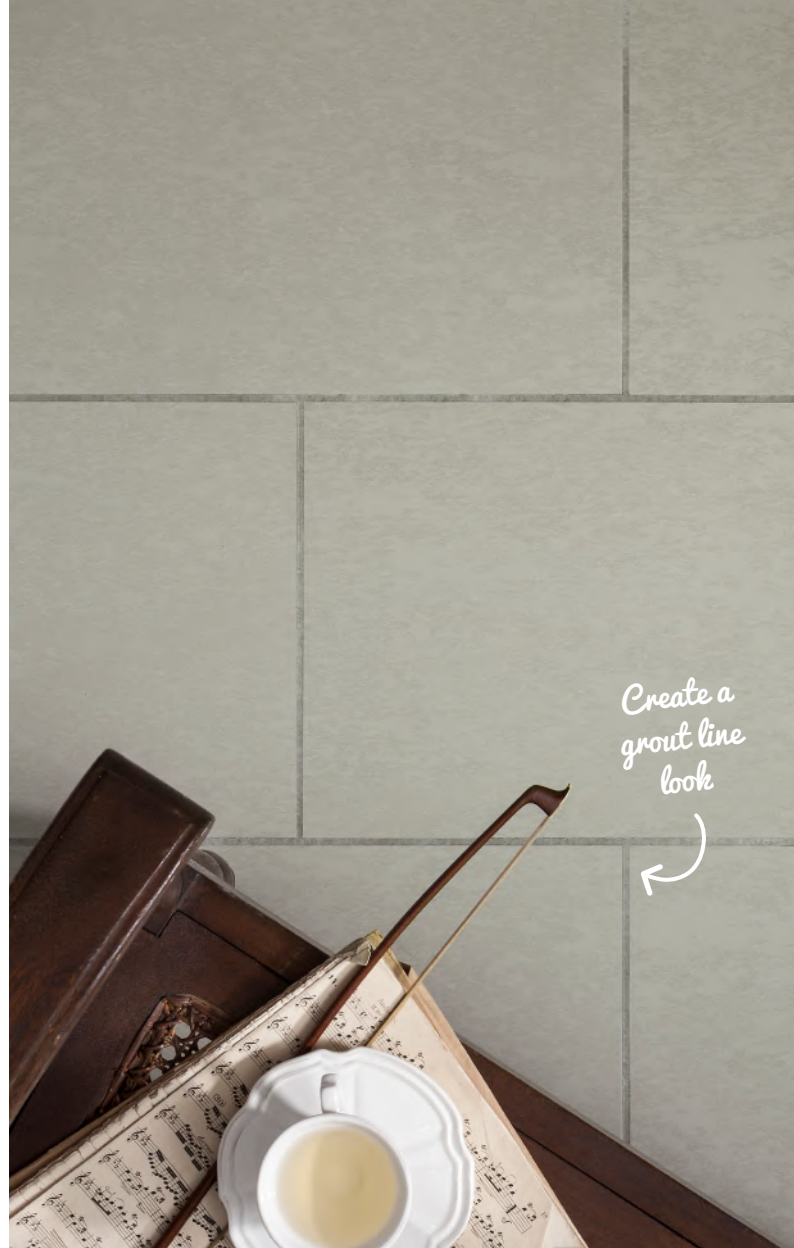
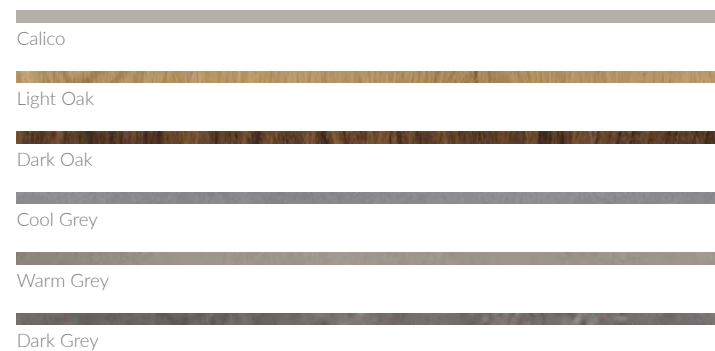


A. Jurassic Square & Jurassic Edge  
B. Jurassic Square  
C. Jurassic Edge



## FEATURE STRIPS

Our design feature strips will add a touch of refinement and designer sophistication to your floor. Use light or dark wood strips to create the appearance of elegant veneer inlays with your wood planks. Or choose from a palette of grey and neutral strips to lift the appearance of your stone design floor, defining and enhancing the look of the tile with an authentic grouted appearance.

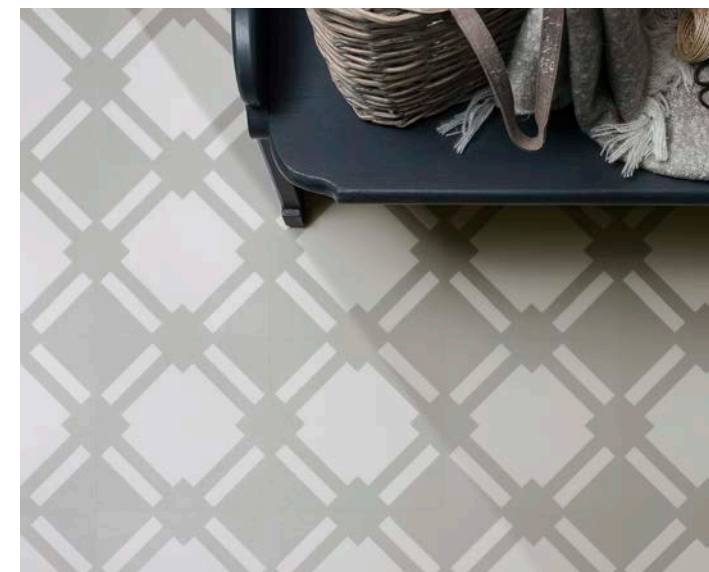


## FITTING & CARING FOR YOUR NEW FLOOR

Always remember to add the recommended glues and cleaning products to your order to ensure that your new floor is fitted and maintained in line with its warranty.

### Adhesives

Choose from our comprehensive selection of adhesives, available in a range of convenient sizes, including the High Temperature adhesive for use when fitting in areas exposed to greater temperatures.



### FloorSpa™ floor care kit

The new Harvey Maria FloorSpa™ is designed to make caring for your floor a breeze. Containing a gentle day to day cleaner, protector and deep cleaning scrub, you'll be amazed at just how good it is!

And using the recommended Harvey Maria products in line with the fitting and care instructions will guarantee your floor looks fabulous for years to come.

### WHAT'S INCLUDED IN THE KIT?



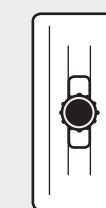
Cleanse 750ml



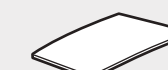
Protect 750ml



Scrub 750ml



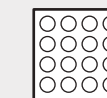
Applicator



Scrub pad



Microfibre pad



Furniture pads



Instructions

## OTHER FLOORS IN OUR COLLECTION

As well as our exclusive Signature collection, take a peek at our other inspiring floors, designed to suit any home or commercial space.

### More Sparkle

A colourful floor adds a fun and fresh element to any interior. Choose from a metallic, sparkle or matte finish for your striking block coloured floor, or create a classic chequerboard design in any number of shades.

### Custom Designs

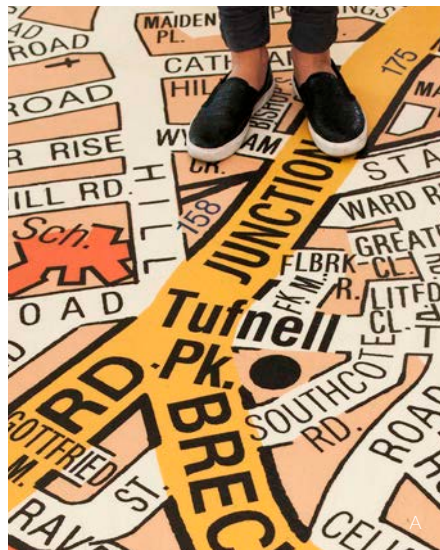
Our clever custom service means that we can turn any design, idea or image into a durable sheet vinyl floor. The minimum order is just 12 square metres, and our experienced team are here to help you every step of the way.

### The Master Craftsman Series

A sublime collection of ultra-realistic oak and wood plank designs. With fine wood grain detail and authentically textured top surface, they have to be seen and touched to be believed. Available exclusively from your Harvey Maria Master Craftsman retailer - samples available online.

### Commercial

From unique restaurants to vibrant offices, our floors prove that commercial flooring doesn't have to be boring. All of our designs boast impressive durability and are easy to clean and maintain, making them suitable for the most demanding spaces.



A. Custom Printed Flooring  
B. Highland, Master Craftsman Series  
C. Cove, Master Craftsman Series



## FIND OUT MORE

### Get Inspired

For room-by-room style ideas, our online inspiration pages and customer gallery are full of fabulous photos, hints and tips. Or, for something a little more personal, we also offer a free design consultation service to help you create your perfect space.

### Order Your Sample

To help you choose the right design, and to make sure it fits your home beautifully, try our online free sampling service.

Samples provide a more reliable portrayal of the floor than a screen or brochure, where authentic colour reproduction can vary. Our samples are cut from larger tiles and colours can vary slightly from batch to batch.

### Harvey Maria Authorised Retailers

Search our website for details of your nearest Harvey Maria Approved Retailer showroom, and ask about their supply and expert fitting service.



Showroom: Hale Carpets & Flooring

### Tile Size & Pack Coverage

Design	Tile/Plank size (cm) (w) x (l)	Pieces per pack	Pack coverage
Cath Kidston Rose Sprig	30.5 x 45.7	8	1.115 sq m
Cath Kidston Spot	30.5 x 30.5	12	1.115 sq m
Dee Hardwicke Lattice	30.5 x 30.5	12	1.115 sq m
Heritage Colours - Little Bricks	15.2 x 30.5	24	1.115 sq m
Heritage Colours - Squares	22.8 x 22.8	24	1.25 sq m
Neisha Crosland Check	30.5 x 30.5	12	1.115 sq m
Neisha Crosland Dovetail	30.5 x 30.5	12	1.115 sq m
Neisha Crosland Parquet	30.5 x 30.5	12	1.115 sq m
Organics Design	30.5 x 30.5	12	1.115 sq m
Organics Stone	30.5 x 45.7	16	2.23 sq m
Premium Wood Parquet	10.2 x 30.5	72	2.23 sq m
Premium Wood Plank	15.2 x 91.4	14	1.95 sq m



**SUPER DURABLE**



**EASY CARE**



**BATHROOMS**



**UNDERFLOOR HEATING**



**ISO 14001 ENVIRONMENTAL MANAGEMENT SYSTEMS**

## YOUR QUESTIONS ANSWERED

### Are Harvey Maria floors suitable for bathrooms?

Yes. Our floors are completely waterproof and slip resistant, so they are perfect for bathrooms. The tiles butt up tightly together and our recommended adhesive creates a watertight bond.

### Are they compatible with underfloor heating?

All Harvey Maria floors are suitable for use with underfloor heating. Simply follow our installation guidelines along with those of the heating system manufacturer, and don't forget to choose high temperature adhesive.

### How is Harvey Maria flooring fitted?

A trained fitter will always produce the best results, so ask your retailer about their expert fitting service. Detailed instructions and videos are available on our online Fitting page.

### Are Harvey Maria floors guaranteed?

All flooring from our Signature collection is supplied with a 25 year domestic warranty. Ask your retailer for more information, and check full terms and conditions on our website.

### How many packs will I need?

Ask your retailer about their measuring service, or use our online Room Size Calculator to work out the number of packs needed to cover your floor.

For any other help, information, or if you just fancy a chat, please don't hesitate to get in touch.







HARVEY MARIA®  
— FABULOUS FLOORS —



I enjoy being a brochure, so please pass me to a friend when you're finished.

© Harvey Maria Ltd

[www.harveymaria.com](http://www.harveymaria.com)